



# THE PANSY PRESS

April 2010, 2nd Quarter



## President's Letter

Greetings Tri Deltas,

Happy Anniversary! We are thrilled to celebrate the 75th Anniversary of the Tampa Alumnae Chapter this year. What an exciting milestone to reach, and how fulfilling to think of the hundreds of women who have played a part in 75 successful years for our Chapter! Please join us at our Spring Luncheon, **Deltas & Diamonds**, on April 24th to celebrate this diamond anniversary in style. We hope to see you there!

We've had quite a busy year so far. We started with a beautiful fall luncheon at Palma Ceia Golf & Country Club, assisted Beta Alpha during recruitment, enjoyed a number of fun Deltas Do Dinner gatherings, planned a successful Poinsettia sale, hosted a lovely Silver Coffee holiday celebration welcoming our newest collegiate members to Tri Delta and gathered at our annual Deltas & Dates Wine Tasting event. Many thanks to VP Programming Liz Wherley, Social Chairman Lisa Humphrey, Poinsettia Sale Coordinators Mary Jeanne Lykes, Shannon Walsh, and Cherry Flynn, and hostess-extraordinaire Pam Cozene for all of their efforts with these exciting endeavors.

I also want to thank Treasurer Kate Crawford for all of her hard work keeping our finances in order, and Elaine Taylor for her organizational efforts as our Secretary this year. Michelle Shimberg and her outstanding Advisory Committee at Beta Alpha have gone above and beyond in their dedication to our local collegiate chapter, and for that I am most grateful. Shannon Walsh has not only kept tabs on our website, [www.TampaTriDelta.com](http://www.TampaTriDelta.com), but has done an amazing job representing Tri Delta while serving as President of the Tampa Alumnae Panhellenic Association. And I certainly can't forget to recognize our new Communication Chair, Heather Azzarello Crist, who has designed this beautiful e-newsletter for our Chapter! These women are all amazing, and I appreciate all of the time and talent they have shared with us this year.

Please plan to join us at one of our April events, perhaps attend one of the luncheons or dinners at Tri Delta Convention in Orlando this June, and consider sharing your talents by joining a committee or stepping into one of our leadership positions for next year. We look forward to many great events in the next year, and you may be just the person to start the fun. You'll be glad you did!

Loyally,  
Kathleen Patterson Lopez  
Alpha Psi '83

### Beta Alpha News

Beta Alpha chapter has had a very successful year. In December, they were recognized at the Panhellenic awards banquet with Shereen Sarthou winning the "Recruitment Shining Star" award for having the outstanding recruitment chairman. Sydney Wamsley was recognized as Outstanding Chapter President."

New officers have been elected for 2010. The chapter president is Erin Potter and the recruitment chairman is Lauren Chandler. Tania Pains was elected as the Panhellenic President for 2010.

Recruitment dates for Fall 2010 have been established. Recruitment will be held September 2-6, Labor Day weekend. If you are interested in assisting with some part of recruitment, please contact Michelle Shimberg, [mpshimberg@attglobal.net](mailto:mpshimberg@attglobal.net).

### Happy Anniversary to US!

Congratulations  
Tampa Alumnae Chapter,  
celebrating our 75th  
Anniversary this year!  
Our chapter was chartered  
March 16, 1935.

We recently received a lovely  
certificate of recognition from the  
Executive Board  
and will celebrate this  
milestone anniversary at our  
Spring Luncheon!



## Spring Luncheon News

Please join us for our **Annual Spring Luncheon**,  
this year celebrating the *75th Anniversary* of the Tampa Alumnae Chapter!



**Deltas & Diamonds**  
**Saturday, April 24th**  
11:30 a.m. - 1:00 p.m.  
Nancy Nelson's home  
3320 Sierra Circle  
South Tampa

*RSVP by April 21st via our website or your Evite invitation please.*

**Congratulations to the following members who will be recognized at this very special event:**

**Diamond Circle Degree—75 years of membership in Tri Delta:**

Martha Sale Ferman  
and the Tampa Alumnae Chapter

**Golden Circle Degree—50 years of membership in Tri Delta:**

Kathleen Crooks Ball  
Carlene Hotz Carlin  
Patsy Keadle Clifford  
Katherine Coburn Dyer  
Jordan Dykes Marti  
Carole Ellenson Mills  
Lois Lacivita Nixon  
Nancy Tynefield Talley

**Silver Circle Degree—25 years of membership in Tri Delta:**

Bret Schrotel Anderson  
Kathy Castor  
Patty Dignam  
Lisa Berry Dillard  
Jill Fischer Dominguez  
Pam Schmitt Jeeves  
Stephani Alexander Kuperschmid  
Gina Bradshaw Schiro  
Judy Bowman Stoneham  
Lynda Blake White

**Circle Degree—welcoming the graduating seniors of Beta Alpha to the Alumnae membership**

Kylie Elizabeth Blahut  
Kristin Catlin  
Nina Consolo  
Kelly Davis  
Allison Hirshey  
Rebekah Modisette  
Shereen Sarthou  
Ashley Scherch  
Nicole Voute  
Sara Wamsley

[www.tampatridelta.com](http://www.tampatridelta.com)

Members can pay dues here through PayPal as well as pay for events (that require payment). Members can visit the website for up to information on activities, board member information, Beta Alpha, Panhellenic, Philanthropy activities and a link to the national website.



### Pansy Personals

Megan Flynn McAteer and husband, Derrill, are parents of Kathryn Flynn McAteer born April 9, 2009.

Elaine Perez Taylor's husband, Bill, passed away in January 2009 after a long illness. William Taylor's name will be added to the Vietnam Veterans Memorial Wall on May 31, 2010 in a special ceremony in Washington D.C.

Email Heather Azzarello Crist at [hcrist22@gmail.com](mailto:hcrist22@gmail.com) to have your announcement included in the next newsletter.

## Alumnae Chapter Position Opportunities

Please consider sharing YOUR talent and time with the Tampa Alumnae Chapter this year!

We are looking for alumnae to serve in many capacities!  
Our Nominating Committee, consisting of Shannon Coram, Cherry Flynn and Laura Stevenson, will be slating our 2010-2011 Board:

President  
VP/Programming  
Treasurer  
Secretary  
Reference Chairman  
Communications Chairman

The Alumnae Chapter Board will appoint our 2010-2011 Chairmen:

Social Chairman  
Membership Chairman  
Website Chairman  
Philanthropy/Poinsettia Sale Chairman  
Panhellenic Representative  
Founders' Day Chairman  
Sunshine Committee Chairman  
Young Alumnae Chairman

While some of our talented board members have agreed to continue in their positions for the coming year, some positions are now open, so we would love to hear from you regarding any interests you may have in serving your Alumnae Chapter!

Please contact 2009-2010 President Kathleen Lopez at [Kathleen.Lopez@smeds.org](mailto:Kathleen.Lopez@smeds.org) to ask any questions or to share your enthusiasm for any of these rewarding positions!!

We are looking forward to working with you!

## 2010-2011 Committee Members Needed

Interested in helping, but not ready to take on a leadership position?

We have just what you need!  
The following committees need new members for 2010-2011:

Founders' Day Planning Committee  
*(We are the Host Chapter for the 2010 Founders' Day Celebration in November!)*  
Poinsettia Sale Committee  
Young Alumnae Planning Committee *(New!)*  
Sunshine Committee *(New!)*  
Social Committee  
Community Outreach Committee *(New!)*

Please contact Kathleen Lopez at [Kathleen.Lopez@smeds.org](mailto:Kathleen.Lopez@smeds.org) if we can count on you to serve on any of these committees!

Your participation will be greatly appreciated!



We offer pansy bouquets and special thanks to **Pam Forrester Cozene**, Alpha Eta '88 (FSU), for not only hosting us at her restaurant, *The Grape*, for our January Deltas and Dates Wine Tasting, but for also opening her home to us as hostess for our annual **Silver Coffee** Christmas celebration in December! Thank you for being so generous to us, Pam -- we appreciate your dedication to the Tampa Alumnae Chapter!



## Upcoming Events

**Monday, April 5th**  
Deltas Do Dinner  
Tampa History Museum  
6:00—8:00 p.m.  
The cost is \$12.

**Saturday, April 24**  
Spring Luncheon  
3320 Sierra Cir in  
Tampa  
11:30 a.m.—1:00 p.m.  
The cost is \$10.

**June 30-July 3**  
DDD Convention  
JW Marriott Orlando  
Grande Lakes  
Women of Achievement  
Luncheon (July 1st)  
Awards Banquet  
(July 3rd)

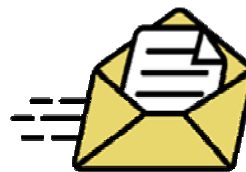
## Founders' Day

This year, the Tampa Alumnae Chapter will be hosting Founders' Day!



## News & Photos

If you have any exciting news or alumnae photos to share for our next newsletter, please email Heather Azzarello Crist at [hcris22@gmail.com](mailto:hcris22@gmail.com).



## Dues & Member Information

Membership in Tri Delta offers a lifetime of Friendship! What better way to have an opportunity to develop these friendships than by joining your local Alumnae Chapter!

To become a member of the Tampa Tri Delta Alumnae Chapter,  
simply fill out the "Chapter Dues Form".  
You can access the form on the Membership Page of our website.

[www.tampatridelta.com](http://www.tampatridelta.com)

You can submit your form and pay your dues online or you can print the form and mail it along with your dues to:

Delta Delta Delta  
PO Box 320414  
Tampa, FL 33679

We look forward to seeing you at our next chapter event and  
thank you for supporting our local alumnae chapter!

Confused about when to pay Dues?

Many of us are, so we wanted to take the time and help you come up with an easy way to remember. Our fiscal year is very similar to the standard school year, as collegians heading back to school in August, this meant Rush and paying our Dues. Nothing has changed! So as the lazy days of summer come to an end and college football season approaches, just remember it's time to pay my Tri Delta Alumnae Chapter Dues!

Select your Level: (1) \$50 Regular, (2) \$60 Supporting or (3) \$70 Sarah Ida Shaw

### Tampa Alumnae Chapter Board 2009-2010

President	<a href="#">Kathleen Patterson Lopez</a>
VP of Programming	<a href="#">Liz Mathews Wherley</a>
Treasurer	<a href="#">Kate Crawford</a>
Secretary	<a href="#">Elaine Perez Taylor</a>
Social Development	<a href="#">Lisa Humphrey</a>
Website Coordinator	<a href="#">Shannon Walsh</a>
Communications	<a href="#">Heather Azzarello Crist</a>
Membership	<a href="#">Lauren Toner Peavy</a>
Reference	<a href="#">Kathleen Patterson Lopez</a>
Philanthropy	
Panhellenic President (08-10)	<a href="#">Shannon Walsh</a>
Beta Alpha Alumnae Advisor	<a href="#">Michelle Popp Shimberg</a>
Lifetime Membership Advisor	
Beta Alpha Financial Advisor	<a href="#">Michelle Davis Garis</a>
Beta Alpha House Corp	<a href="#">Megan Bock</a>

If you have any questions, comments, or ideas to better our chapter, please feel free to contact your officers. Just click on the name above to send an e-mail. If you are interested in an open position, please contact [Kathleen Lopez](#).

### Poinsettia Sale

We would like to thank all of the Tri Deltas who purchased and/or sold poinsettias and greenery during our Annual Poinsettia Sale in November, as well as the many alumnae who volunteered during the two-day distribution/delivery of plants in early December. Many hands make light work! Thanks to our committee of Mary Jeanne Lykes, Shannon Walsh, and Clara Gough, and **special** thanks to Cherry Flynn, who hosted this year's sale site at her Hyde Park home. The Tampa Alumnae Chapter proudly made a donation of \$2,148 to the Children's Cancer Center thanks to everyone's participation in our philanthropy effort!

Be on the lookout for 2010 Poinsettia Sale information this fall, as we continue our support of Tampa's own Children's Cancer Center.

